



MIAMI-DADE COUNTY  
 BUILDING CODE COMPLIANCE OFFICE (BCCO)  
 PRODUCT CONTROL DIVISION

MIAMI-DADE COUNTY, FLORIDA  
 METRO-DADE FLAGLER BUILDING  
 140 WEST FLAGLER STREET, SUITE 1603  
 MIAMI, FLORIDA 33130-1563  
 (305) 375-2901 FAX (305) 375-2908

**NOTICE OF ACCEPTANCE (NOA)**

Elco Textron, Inc.  
 5110 Falcon Road.  
 Rockford, IL 61125

**SCOPE:**

This NOA is being issued under the applicable rules and regulations governing the use of construction materials. The documentation submitted has been reviewed by Miami-Dade County Product Control Division and accepted by the Board of Rules and Appeals (BORA) to be used in Miami Dade County and other areas where allowed by the Authority Having Jurisdiction (AHJ).

This NOA shall not be valid after the expiration date stated below. The Miami-Dade County Product Control Division (In Miami Dade County) and/or the AHJ (in areas other than Miami Dade County) reserve the right to have this product or material tested for quality assurance purposes. If this product or material fails to perform in the accepted manner, the manufacturer will incur the expense of such testing and the AHJ may immediately revoke, modify, or suspend the use of such product or material within their jurisdiction. BORA reserves the right to revoke this acceptance, if it is determined by Miami-Dade County Product Control Division that this product or material fails to meet the requirements of the applicable building code.

This product is approved as described herein, and has been designed to comply with the High Velocity Hurricane Zone of the Florida Building Code.

**DESCRIPTION:** Concrete-Flex SS4 Concrete & Masonry Screw

**APPROVAL DOCUMENT:** Drawing No.00-094, Sheets 1 of 1, titled "Crete-Flex SS4 Masonry Screw" dated 03/10/00 with last revision on 02/18/03, prepared by Knezevich & Associates, Inc., signed and sealed by V. J. Knezevich, PE, bearing the Miami-Dade County Product Control Renewal stamp with the Notice of Acceptance (NOA) number and expiration date by the Miami-Dade County Product Control Division.

**MISSILE IMPACT RATING:** None

**LABELING:** Each unit shall bear a permanent label with the manufacturer's name or logo, city, state and following statement: "Miami-Dade County Product Control Approved", unless otherwise noted herein.

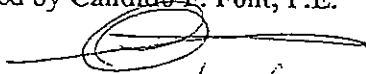
**RENEWAL** of this NOA shall be considered after a renewal application has been filed and there has been no change in the applicable building code negatively affecting the performance of this product.

**TERMINATION** of this NOA will occur after the expiration date or if there has been a revision or change in the materials, use, and/or manufacture of the product or process. Misuse of this NOA as an endorsement of any product, for sales, advertising or any other purposes shall automatically terminate this NOA. Failure to comply with any section of this NOA shall be cause for termination and removal of NOA.

**ADVERTISEMENT:** The NOA number preceded by the words Miami-Dade County, Florida, and followed by the expiration date may be displayed in advertising literature. If any portion of the NOA is displayed, then it shall be done in its entirety.

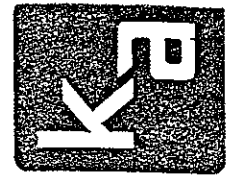
**INSPECTION:** A copy of this entire NOA shall be provided to the user by the manufacturer or its distributors and shall be available for inspection at the job site at the request of the Building Official.

This NOA renews NOA # 99-1227.13 and, consists of this page 1 as well as approval document mentioned above. The submitted documentation was reviewed by Candido E. Font, P.E.

  
 5/22/3



NOA No 03-0225.05  
 Expiration Date: April 14, 2008  
 Approval Date: May 22, 2003  
 Page 1



**SCREW NOMINAL DIAMETER = 1/4"**

DIAM. = .200"ø

DIAM. = .260"ø

SPECIAL

| FOR HFH, PFH & HWH        |               |       |         |       |         |       |
|---------------------------|---------------|-------|---------|-------|---------|-------|
| ALLOWABLE LOADS (lbs.)    |               |       |         |       |         |       |
| MIN. 3350 P.S.I. CONCRETE |               |       |         |       |         |       |
| EMBEDMENT                 | EDGE DISTANCE |       |         |       |         |       |
|                           | 1"            |       | 1-3/4"  |       | 2-1/2"  |       |
|                           | TENSION       | SHEAR | TENSION | SHEAR | TENSION | SHEAR |
| 1"                        | 150           | 125   | 165     | 215   | 190     | 265   |
| 1-3/4"                    | 390           | 310   | 525     | 450   | 625     | 645   |
| 2"                        | -             | -     | -       | -     | 880     | 845   |

| FOR HFH, PFH & HWH     |               |       |         |       |         |       |
|------------------------|---------------|-------|---------|-------|---------|-------|
| ALLOWABLE LOADS (lbs.) |               |       |         |       |         |       |
| C90 CONCRETE BLOCK     |               |       |         |       |         |       |
| EMBEDMENT              | EDGE DISTANCE |       |         |       |         |       |
|                        | 1"            |       | 1-3/4"  |       | 2-1/2"  |       |
|                        | TENSION       | SHEAR | TENSION | SHEAR | TENSION | SHEAR |
| 1-1/4"                 | 195           | 105   | 290     | 330   | 305     | 330   |
| 1-5/8"                 | 310           | 135   | -       | -     | -       | -     |

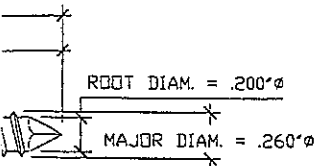
DIAM. = .200"ø

OR DIAM. = .260"ø

SPECIAL

**NOTES**

1. THESE APPROVAL DOCUMENTS REPRESENT A CONCRETE/ MASONRY ANCHOR ANALYZED WITH THE PROVISION SET FOR THE ISSUANCE OF A NOTICE OF ACCEPTANCE (NOA) BY MIAMI-DADE COUNTY PRODUCT CONTROL DIVISION FOR THE HIGH VELOCITY HURRICANE ZONE (HVHZ) OF THE FLORIDA BUILDING CODE
2. CRETE FLEX SS4 IS A 410 STAINLESS STEEL MASONRY FASTENER W/ A SILVER COLORED STALGARD COATING PROCESS TESTED FOR CORROSION RESISTANCE TO PA119
3. ALLOWABLE LOADS ARE BASED ON THE ULTIMATE LOAD DIVIDE BY 4.
4. PILOT HOLE DIAMETER IS TO BE 0.234"ø AND 1/4" LONGER THAN THE REQUIRED EMBEDMENT.
5. CONCRETE SHALL CONFORM TO AMERICAN CONCRETE INSTITUTE MANUAL OF CONCRETE PRACTICE, ACI 301 AND CONCRETE BLOCKS SHALL CONFORM TO ASTM C-90.
6. ANCHOR INSTALLATION SHALL BE MADE IN ACCORDANCE WITH ELCO TEXTRON PRODUCT SELECTION & INSTALLATION INSTRUCTION, PERFORMANCE & TECHNICAL DATA, AND THE MIAMI-DADE COUNTY, FL NOTICE OF ACCEPTANCE.
7. THESE APPROVAL DOCUMENTS ARE GENERIC AND DO NOT INCLUDE INFORMATION FOR A SITE-SPECIFIC APPLICATION.
8. THESE APPROVAL DOCUMENTS COMPLY WITH CHAPTER 61G15-23 OF THE FLORIDA ADMINISTRATIVE CODE.
9. ANY MODIFICATIONS OR ADDITIONS TO THESE APPROVAL DOCUMENTS WILL VOID THE APPROVAL DOCUMENTS.



0 THREAD SPECIAL

PRODUCT RENEWED

in compliance with the Florida

03-0225.05

4/14/05

By Miami Dade Product Control Division

**KNEZEVICH & ASSOCIATES, INC.**  
 CONSULTING ENGINEERS • PRODUCT TESTING  
 1260 N. UNIVERSITY DRIVE, SUITE 180 • FORT LAUDERDALE, FL 33322  
 TEL: (954) 382-2800 • FAX: (954) 382-2889 • FLORIDA COA #3205  
 WEBSITE: WWW.KNEZEVICH.COM • E-MAIL: KA@KNEZEVICH.COM  
 COPYRIGHT © 2003 KNEZEVICH & ASSOCIATES, INC

**CRETE-FLEX® SS4 MASONRY SCREW**  
**ELCO® TEXTRON**  
 CONSTRUCTION PRODUCTS DIVISION  
 5100 FALCON ROAD  
 ROCKFORD, ILLINOIS 61125-7009  
 (800) 435-7213

V.J. KNEZEVICH  
 PROFESSIONAL ENGINEER  
 FL License No. PE 0010983

FEB 18 2003

| revisions |               |
|-----------|---------------|
| no.       | description   |
| 1         | GENERAL NOTES |

date 03/10/00

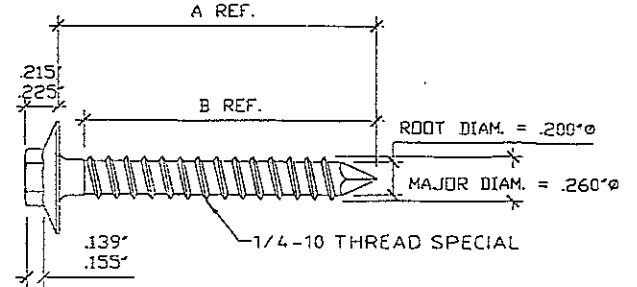
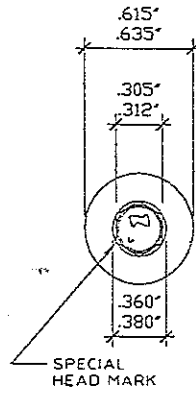
scale AS NOTED drawn by AV

design by MO checked by VJK

drawing no. 00-094

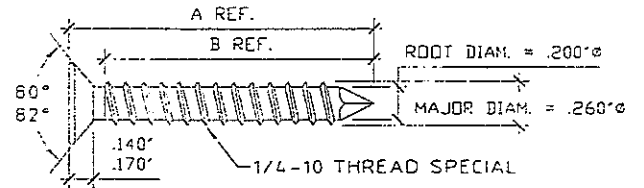
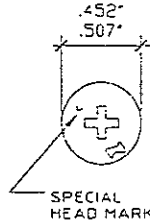
sheet 1 of 1

| CAT. # | A (IN.) | B (IN.) | PART #         |
|--------|---------|---------|----------------|
| MF340  | 1.750   | 1.660   | 274-163-014569 |
| MF360  | 2.250   | 1.750   | 274-163-014689 |



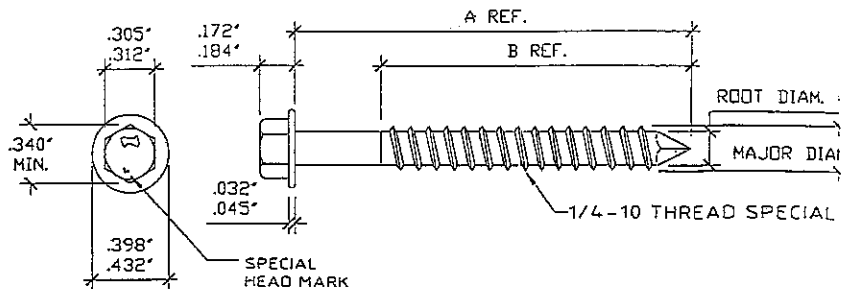
**CRETE-FLEX - HFH**

| CAT. # | A (IN.) | B (IN.) | PART #         |
|--------|---------|---------|----------------|
| MF690  | 1.250   | 1.000   | 274-100-014399 |
| MF710  | 1.750   | 1.500   | 274-100-014559 |
| MF730  | 2.250   | 1.750   | 274-100-014679 |
| MF750  | 2.750   | 1.750   | 274-100-014759 |
| MF770  | 3.250   | 1.750   | 274-100-014819 |
| MF780  | 3.750   | 1.750   | 274-100-014859 |
| MF810  | 4.000   | 1.750   | 274-100-014879 |



**CRETE-FLEX - PFH**

| CAT. # | A (IN.) | B (IN.) | PART #         |
|--------|---------|---------|----------------|
| MF310  | 1.250   | 1.160   | 274-163-014399 |
| MF330  | 1.750   | 1.660   | 274-163-014559 |
| MF350  | 2.250   | 1.750   | 274-163-014679 |
| MF370  | 2.750   | 1.750   | 274-163-014759 |
| MF390  | 3.250   | 1.750   | 274-163-014819 |
| MF410  | 3.750   | 1.750   | 274-163-014859 |
| MF430  | 4.000   | 1.750   | 274-163-014879 |



**CRETE-FLEX - HWH**